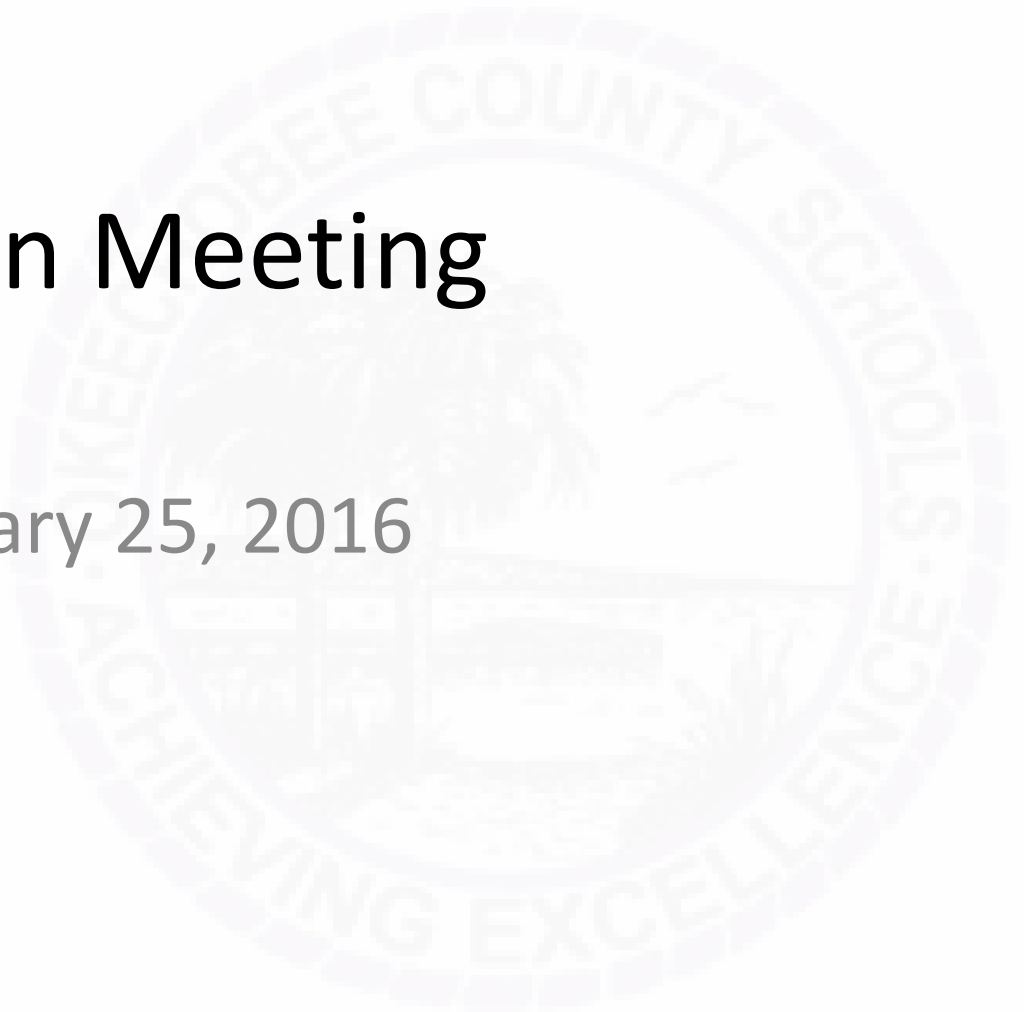


# Admin Meeting

January 25, 2016



# U.S. News – Best High School

## Okeechobee Freshman Campus Overview

OVERVIEW

STUDENT BODY

TEST SCORES

### 2015 Academic Indicators

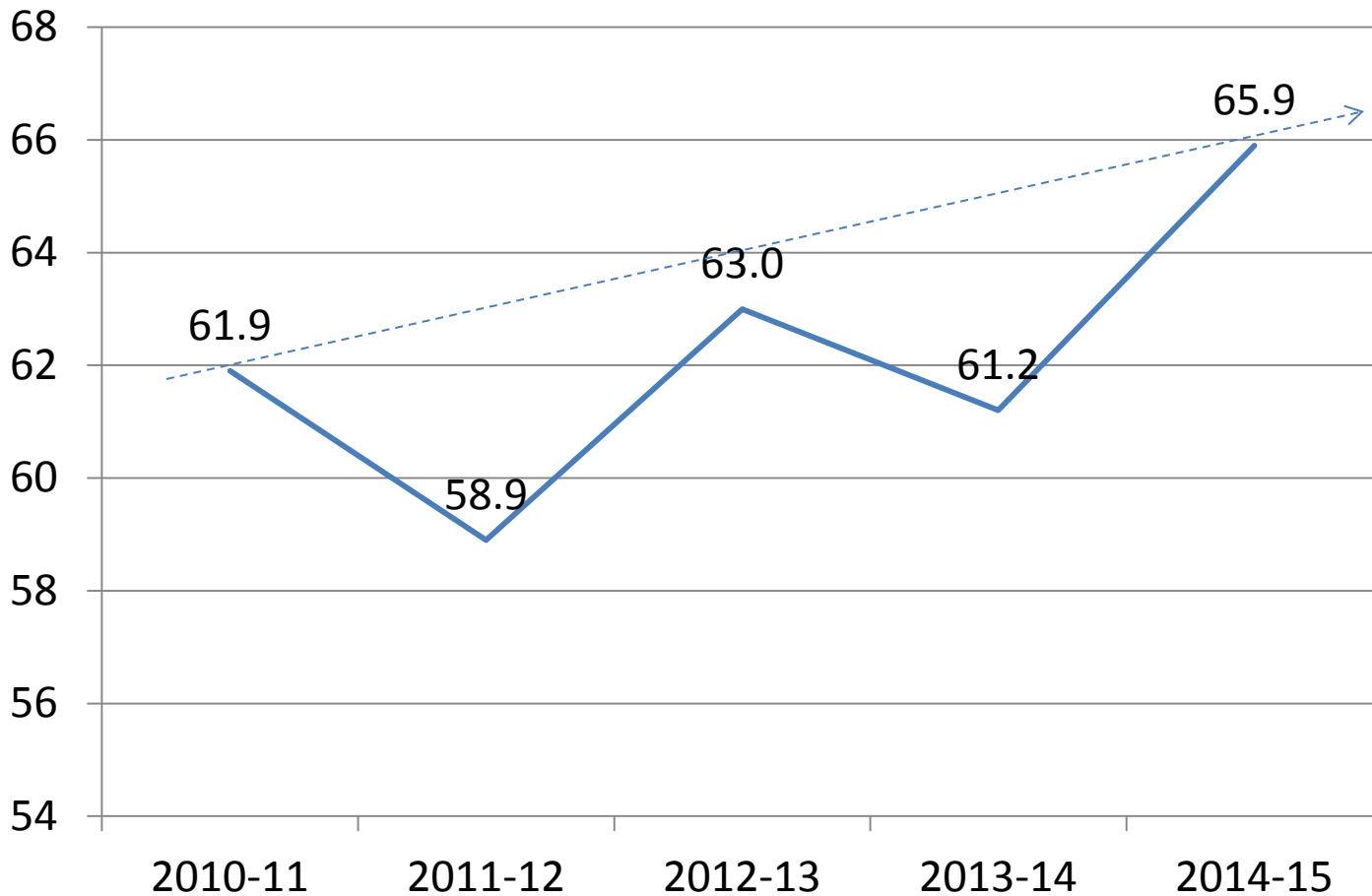
National Rank	Bronze
College Readiness Index	N/A
Mathematics Proficiency	3.0
Reading Proficiency	2.5
Student-Teacher Ratio	23:1

9–9 Grades 473 Students 21 Teachers

Okeechobee Freshman Campus  
610 SW 2ND AVE  
OKEECHOBEE, FL 34974  
Phone: (863) 462-5288  
District: [Okeechobee County School District](#)



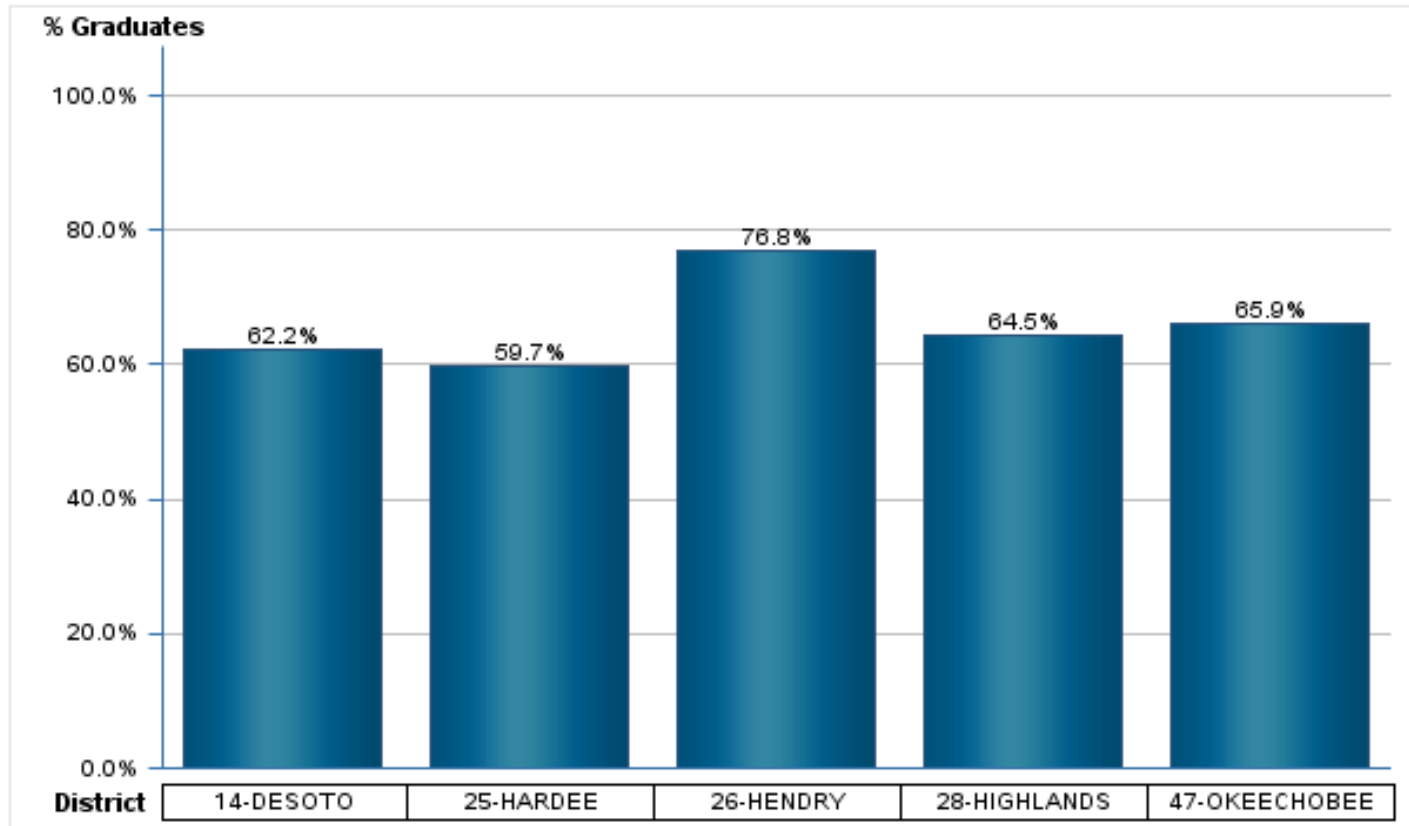
# Graduation Rate Increases



# Graduation Rate Increases

## Graduation Rates

Applied filters: District equal to 14-DESOTO, 25-HARDEE, 26-HENDRY, 28-HIGHLANDS, 47-OKEECHOBEE



# Perfect Audits

Employee	School	Principal
Jackie Skinner	Central	Vanessa McAllister
Jessica Lyng	Everglades	Leslie Lundy
DeeDee Coker	Seminole	Matt Koff
Debbie Hill	Osceola	Sean Downing
Laura Fonseca	Freshman Campus	Carol Revels
Jennifer Harden	Achievement Academy	Randy Weigum



# Perfect Attendance

Employee	Position	School
Joyce Autrey	Paraprofessional	North
Amanda Clark	Paraprofessional	Seminole
Patricia Kenney	Teacher	Seminole
Pam McCranie	Teacher	Seminole
Rose Waldron	Paraprofessional	Seminole
John Watson	Bus Aide	Transportation
Brenda Arnold	Payroll Specialist	Finance
Ramona Solorzano	Food Service Assistant	Everglades
John Wright	Teacher	Everglades



# % ADA

School	ADA %	# Perfect Attendance
Everglades Elementary School	95.7 %	34
Central Elementary School	95.4 %	13
South Elementary School	95.3 %	3
North Elementary School	95.2 %	7
Seminole Elementary School	95.1 %	19
Osceola Middle School	94.2 %	21
Freshman Campus	93.8 %	14
Yearling Middle School	93.7 %	16
Okeechobee High School	92.8 %	10
Okeechobee Achievement Academy	80.8 %	2





## Empowering Families to Improve Student Learning

POSTED ON 12.29.15



### BRIEFLY

- » WestEd's Academic Parent-Teacher Teams (APTT) approach engages families in their children's learning.
- » Teachers provide families with targeted strategies and resources to use with their children to reinforce academic goals.
- » Research indicates family engagement is a strong predictor of students' academic success.

When officials at North Elementary School in Okeechobee, Florida, cancelled the school's Carnival and Family Reading Night, parents were a bit confused and somewhat dismayed. Such events had been long-standing ways of encouraging them to get involved in their children's school. But North Elementary's principal, Pat McCoy, realized that "while events like a school carnival offer a nice chance to socialize, they don't actively engage parents in their child's learning."

[Like](#) 41 [Tweet](#)

#### CONTACT

Maria Paredes

480.623.0425

[Contact by email](#)

#### RELATED ITEMS

##### PROGRAMS

[Comprehensive School Assistance Program](#)

##### RESOURCES



What Works Brief #9: Family Engagement



Family Engagement Framework: A Tool for California School Districts (2014 Edition)



Family Engagement Framework: A Tool for California School Districts (2014 Spanish Edition)

[VIEW MORE](#)

#### SERVICES

[Family & Community Engagement: Academic Parent-Teacher Teams](#)

# North Elementary APTT Recognition





# IT Recognition



The official source for information about Google's education-related efforts

## Florida schools share their tips for introducing new learning technology

Posted: Thursday, December 17, 2015



155



Tweet



Like

12

Posted by John Allen and David Harrington, Google for Education team

**Editor's note:** Schools across Florida are seeing great success with Google for Education. Today we're featuring tips from School District of Lee County, Okeechobee County School District and Escambia County School District. To learn more, [watch this recent webinar](#) with Lee County. And if you'll be at FETC from January 12-15, visit us in the Expo Hall at #2221.

The state of Florida is leading the way for digital instruction. A recent state mandate requires that K-12 students have access to digital learning resources. The shift from paper-based to digital content is prompting students to research and publish their work online while encouraging teachers to innovate in the classroom. We recently asked instructional technology administrators in Florida who use [Google Apps for Education](#), [Google Classroom](#) and [Chromebooks](#) to share their recommendations for introducing new technologies and tools in the classroom.



# IT Recognition



## Success Stories

### Making It Happen Award

The Florida Council of Instructional Technology Leaders' first "Making It Happen" awards were presented at the annual membership meeting at FETC 2000. The award had resulted in a tie. Winners of this distinguished international award have also been named at other national conferences. FCITL member winners are listed below.

#### 2016 Winner

**Shawna May, Director of Information Technology,  
Okeechobee County, FETC, Orlando, FL**



Year	Name	Conference
2016	<b>Shawna May</b> Okeechobee County	FETC, Orlando, FL



# Commissioner's Leadership Academy



# Florida Gulf Coast Partnership



# National Institute for School Leadership







1:1 – OFC, OMS & YMS



# Acknowledgements & Shout Outs

- Operations – Projects & Paving
- Students Services – Accreditation
- IT – Academic Plans Website
- HR – TOY & SREY Selections
- Assessment – Assessment
- Food Service – Increases in Breakfast and Lunch Participation
- Grants & Special Programs – Performance Measures on Perkins, English Class for Migrant Parents
- Shared Services – Family Health & Safety Expo
- Finance – ACA, W-2, Audits
- Transportation – Routing Software
- Staff Development - Banquet
- ESE – Crisis Counselor Groups



# Teachers of the Year





# School Related Employees of the Year



# i-Ready Usage

School and Grades	# Active Students Meeting 45+ min of Instruction	% Active Students Meeting 45+ min of Instruction	Avg Time on Task (min)
OKEECHOBEE ACHIEVEMENT ACADEMY	32	70%	73
SOUTH ELEMENTARY SCHOOL	311	69%	61
EVERGLADES ELEMENTARY SCHOOL	457	67%	61
CENTRAL ELEMENTARY SCHOOL	365	61%	59
OSCEOLA MIDDLE SCHOOL	134	36%	47

Schools reaching 45 minutes of instruction for ELA (above) and Math (below) for January, 2016.

School and Grades	# Active Students Meeting 45+ min of Instruction	% Active Students Meeting 45+ min of Instruction	Avg Time on Task (min)
OKEECHOBEE HIGH SCHOOL	4	36%	66
YEARLING MIDDLE SCHOOL	294	58%	59
CENTRAL ELEMENTARY SCHOOL	316	54%	51



# Perfect Text Based Writing Scores

School	Number of Students
Central	2
Everglades	3
Seminole	5
South	3
North	2
Yearling	11
Osceola	18
Freshman Campus	10
High School	22
Total	76

